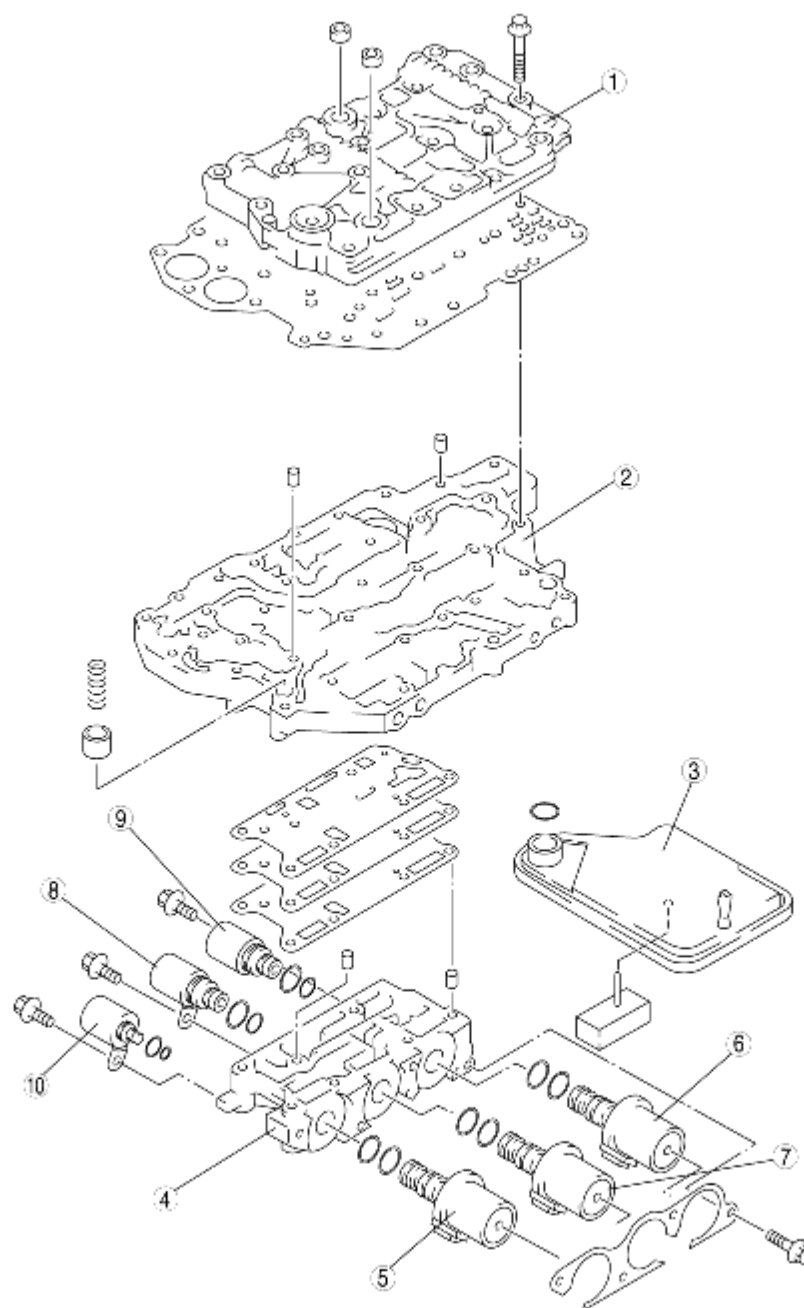


CONTROL VALVE BODY OUTLINE

B3E051721100A01

- The control valve body is composed of three bodies: the upper control valve body, premain control valve body, and the solenoid control valve body.
- Because the clutch engagement pressure is controlled electronically, the hydraulic circuits are simplified, the valve types are reduced, and the control valve body is miniaturized.
- The nonwoven fabric oil strainer is installed in the control valve body to prevent contamination.



B3E0517T019

1	Upper control valve body
2	Main control valve body
3	Oil strainer
4	Solenoid valve body
5	Shift solenoid A
6	Shift solenoid B
7	Shift solenoid C
8	Shift solenoid D
9	Shift solenoid E

10	Pressure control solenoid
----	---------------------------